

MONTEREY, CALIFORNIA

AL-271 (FAA)

LOC/DME I-MTB	Rwy Idg	6616
110.7	TDZE	245
Chon 44	App CRS	278°
	App Elev	254

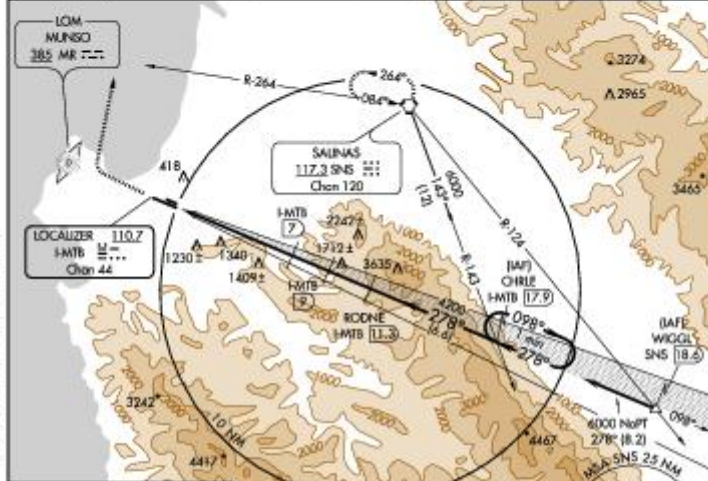
### LOC/DME RWY 28L

MONTEREY PENINSULA (MRY)

**⚠** Crossing not authorized south of Rwy 28L.  
**⚠** Procedure NA when control tower closed.

**MISSED APPROACH:** Climb straight ahead to 3000 then climbing right turn to 5000 via heading 360° and SNS R-264 to SNS VORTAC and hold.

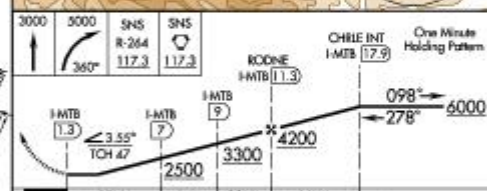
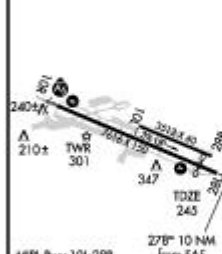
ATIS	NORCAL APP CON	MONTEREY TOWER*	GND CON	CLNC DEL	UNICOM
119.25	133.0 251.15	118.4 (CTAF) 257.8	121.9 348.6	135.45	122.95



SW-2, 23 NOV 2008 to 21 DEC 2008

SW-2, 23 NOV 2008 to 21 DEC 2008

ELEV 254 Rwy 28L Idg 6616'



CATEGORY	A		B		C		D	
	1660-1¼	1415 (1500-¾)	1660-1½	1415 (1500-M)	1660-3	1415 (1500-3)		
S-28L								
CIRCLING	1660-1¼	1406 (1500-1¼)	1660-1½	1406 (1500-1½)	1660-3	1406 (1500-3)		

MONTEREY, CALIFORNIA  
 Amb 36 06271

36°35'N-121°51'W

### MONTEREY PENINSULA (MRY)

### LOC/DME RWY 28L