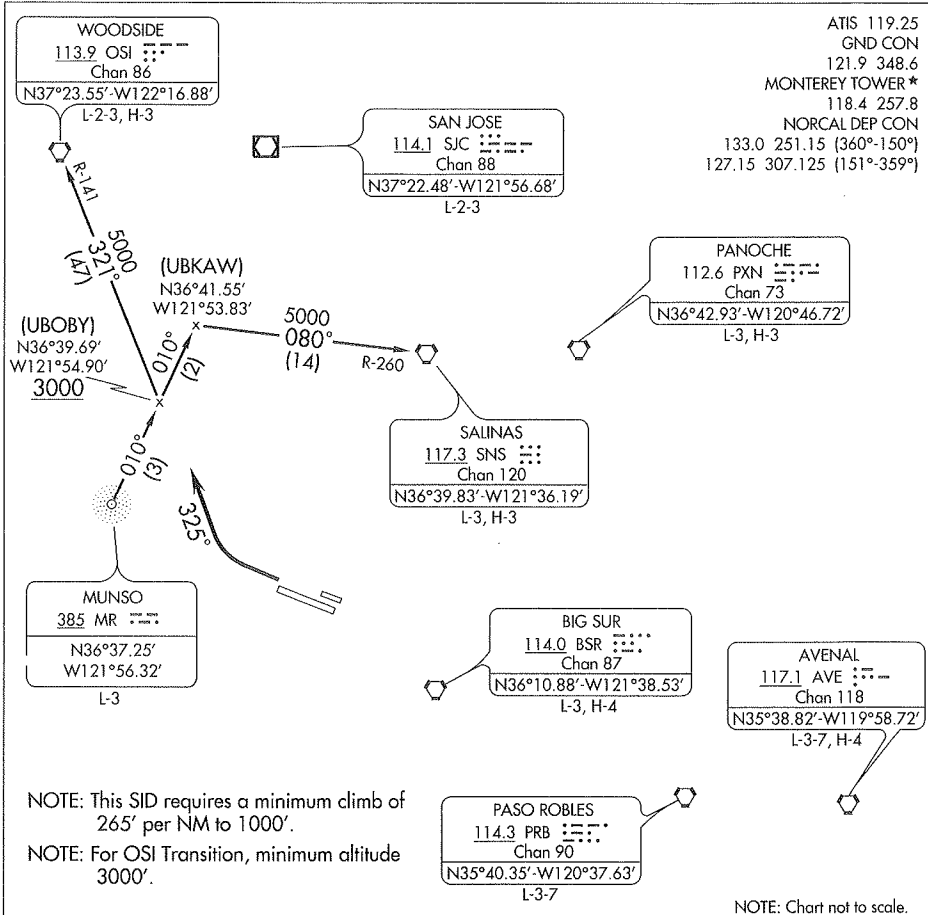


# (MR2.MR) 09351 MUNSO TWO DEPARTURE

SL-271 (FAA)

MONTEREY PENINSULA (MRY)  
MONTEREY, CALIFORNIA



SW-2, 17 DEC 2009 to 11 FEB 2010

SW-2, 17 DEC 2009 to 11 FEB 2010

## DEPARTURE ROUTE DESCRIPTION

**TAKE-OFF RUNWAY 28L/R:** After leaving 1000', or as directed by tower, turn right heading 325° and join the 010° bearing from MUNSO NDB, thence via assigned route or transition. Maintain 6000'. Expect clearance to filed altitude five minutes after departure.

**LOST COMMUNICATIONS:** If no transmissions received for one minute after departure, proceed direct SNS VORTAC, then via assigned fix/route. Climb to 6000' or assigned altitude, whichever is higher.

**SALINAS TRANSITION (MR2.SNS):** From over MUNSO NDB via MR 010° bearing and SNS R-260 to SNS VORTAC.

**WOODSIDE TRANSITION (MR2.OSI):** From over MUNSO NDB via MR 010° bearing and OSI R-141 to OSI VORTAC.