

MONTEREY, CALIFORNIA

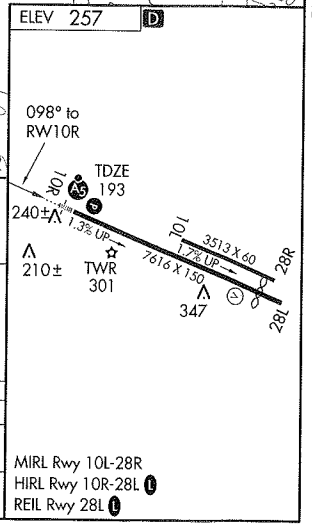
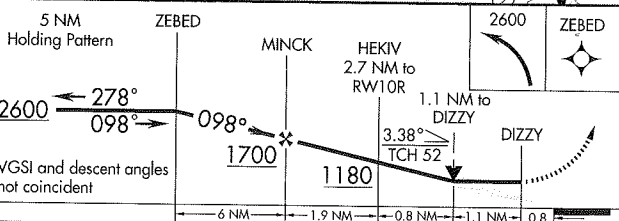
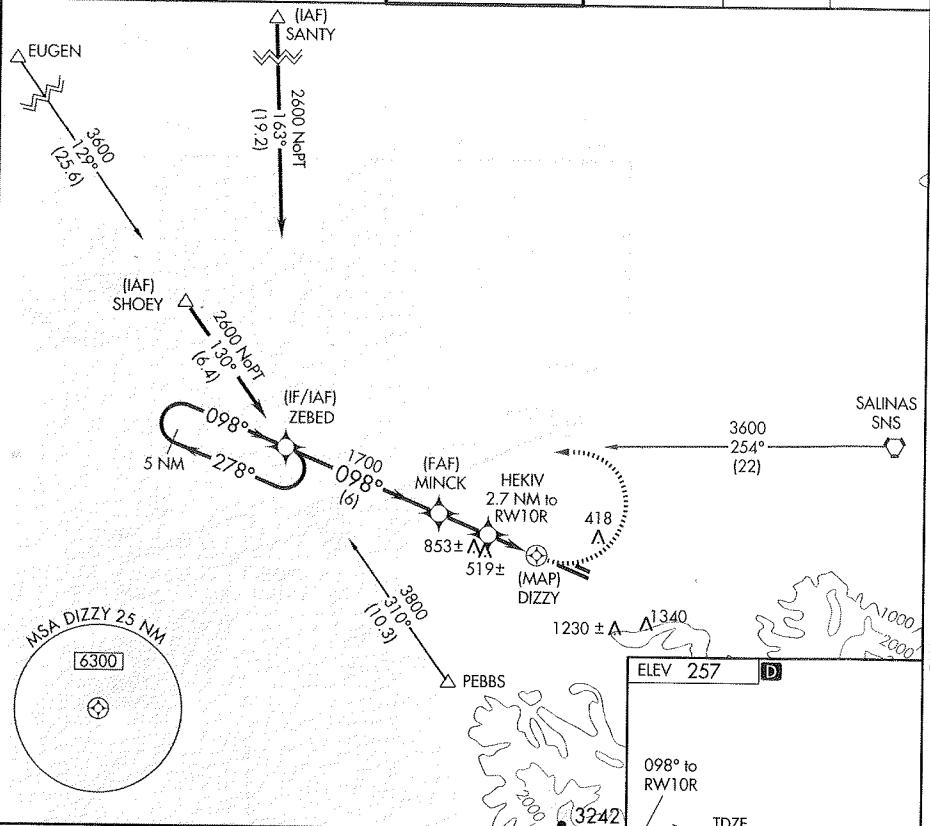
AL-271 (FAA)

RNAV (GPS) Y RWY 10R

MONTEREY PENINSULA (MRY)

| | | |
|-------------|----------|-------------|
| APP CRS | Rwy Idg | 7616 |
| 098° | TDZE | 193 |
| | Apt Elev | 257 |

| | | | | | |
|--|--|--|--|-------------------------------|---------------------------|
| | Circling NA south of Rwy 10R-28L DME/DME RNP -0.3 NA. | MALSR | MISSED APPROACH: Climbing left turn to 2600 direct ZEBED and hold. | | |
| | ATIS 119.25 | NORCAL APP CON 133.0 251.15 (360°-150°) 127.15 307.125 (151°-359°) | MONTEREY TOWER* 118.4 (CTAF) 257.8 | GND CON 121.9 348.6 | CLNC DEL 135.45 |



| CATEGORY | A | B | C | D |
|----------|--------|-------------|------------------------|-------------------------|
| LNAV MDA | 800/24 | 607 (600-½) | 800/60 607 (600-1¼) | 800-1½ 607 (600-1½) |
| CIRCLING | 800-1 | 543 (600-1) | 840-1¾ 583 (600-1¾) | 1080-2¾ 823 (900-2¾) |

MONTEREY, CALIFORNIA
Orig 09239

36°35'N-121°51'W

MONTEREY PENINSULA (MRY)
RNAV (GPS) Y RWY 10R

SW-2, 17 DEC 2009 to 11 FEB 2010

SW-2, 17 DEC 2009 to 11 FEB 2010