

MONTEREY, CALIFORNIA

AL-271 (FAA)

# RNAV (GPS) Z RWY 10R

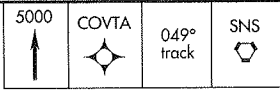
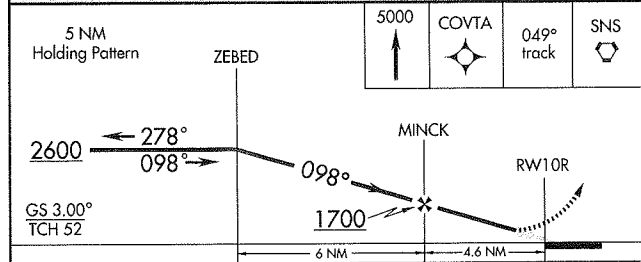
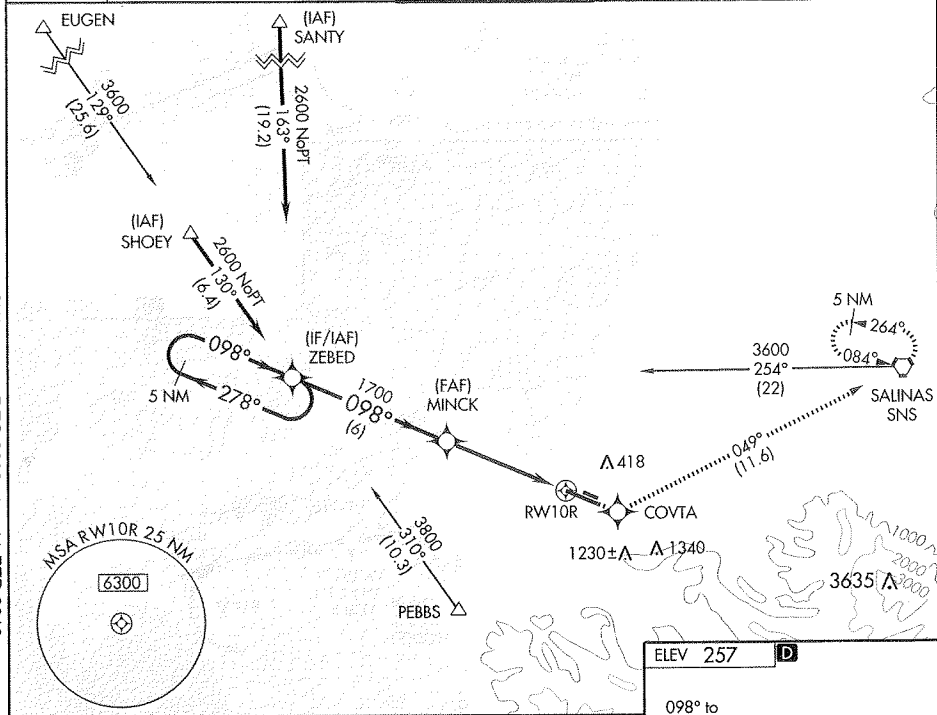
MONTEREY PENINSULA (MRY)

WAAS CH <b>70699</b> <b>W10A</b>	APP CRS <b>098°</b>	Rwy ldg TDZE Apt Elev	<b>7616</b> <b>193</b> <b>257</b>
--	------------------------	-----------------------------	---

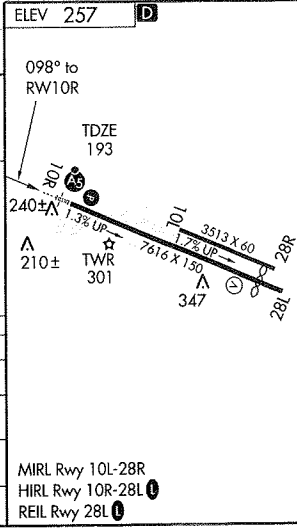


MISSED APPROACH: Climb to 5000 direct COVTA and via 049° track to SNS VORTAC and hold, continue climb-in-hold to 5000.

<b>ATIS</b> <b>119.25</b>	NORCAL APP CON <b>133.0 251.15</b> (360°-150°) <b>127.15 307.125</b> (151°-359°)	<b>MONTEREY TOWER*</b> <b>118.4</b> (CTAF) <b>257.8</b>	<b>GND CON</b> <b>121.9 348.6</b>	<b>CLNC DEL</b> <b>135.45</b>	<b>UNICOM</b> <b>122.95</b>
------------------------------	--	--	--------------------------------------	----------------------------------	--------------------------------



CATEGORY	A	B	C	D
LPV DA		679/60	486 (500-1¼)	
LNAV/VNAV DA			NA	
LNAV MDA			NA	
CIRCLING			NA	



MONTEREY, CALIFORNIA  
Orig 09239

36°35'N-121°51'W

MONTEREY PENINSULA (MRY)  
RNAV (GPS) Z RWY 10R

SW-2, 17 DEC 2009 to 11 FEB 2010

SW-2, 17 DEC 2009 to 11 FEB 2010