

RNAV (RNP) Z RWY 28L

MONTEREY PENINSULA (MRY)

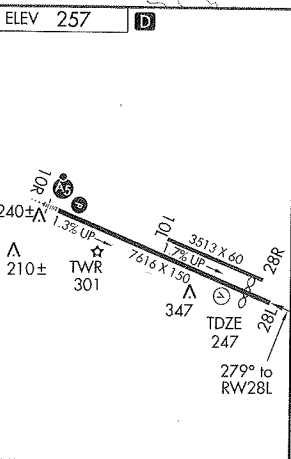
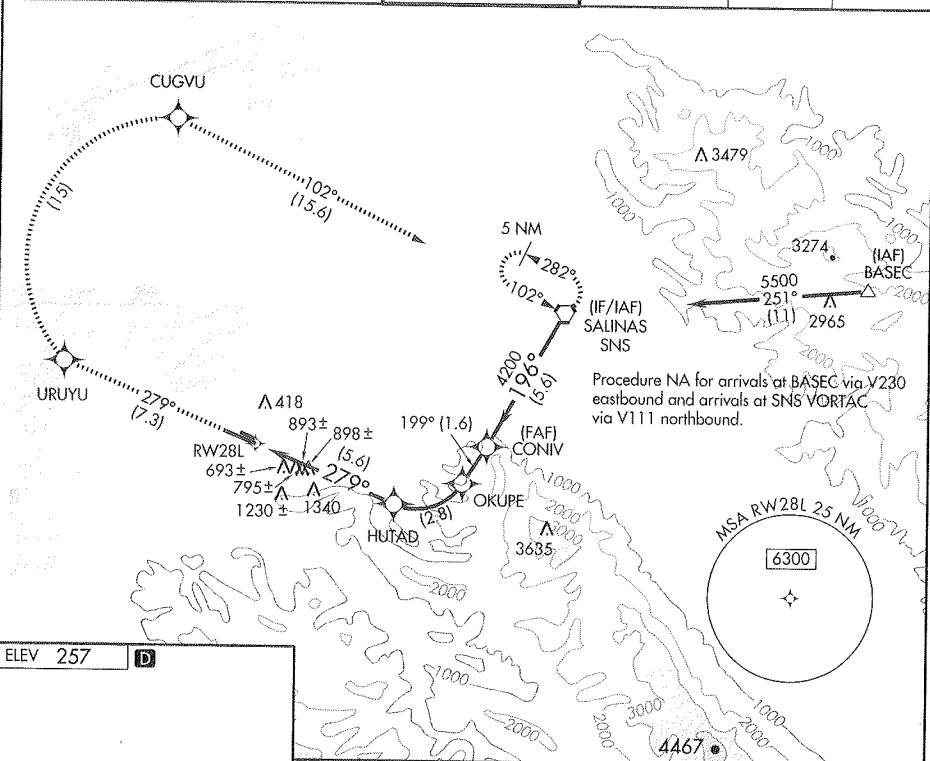
APP CRS	Rwy Idg	6616
279°	TDZE	247
	Apt Elev	257

RF and GPS required. When VGSI inoperative, RNP 0.30 DA NA at night.

NA For uncompensated Baro-VNAV systems, procedure NA below 0°C (32°F) or above 39°C (102°F). Visibility reduction by helicopters NA.

MISSED APPROACH: Climb to 5500 via 279° track to URUYU and via right turn to CUGVU and via 102° track to SNS VORTAC and hold.

ATIS 119.25	NORCAL APP CON 133.0 251.15 (360°-150°) 127.15 307.125 (151°-359°)	MONTEREY TOWER* 118.4(CTAF) 0257.8	GND CON 121.9 348.6	CLNC DEL 135.45	UNICOM 122.95
-----------------------	--	--	-------------------------------	---------------------------	-------------------------



5500	URUYU	CUGVU	102° track	SNS	VORTAC
279°					CONIV
	HUTAD	OKUPE	4200	Procedure Turn NA	
	2465	3568	199°	5500	
			196°	4200	GP 3.60°
					TCH 50
	5.6 NM	2.8 NM	1.6 NM	5.6 NM	

CATEGORY	A	B	C	D
RNP 0.10 DA	497/40	250 (300-¾)		NA
RNP 0.20 DA	1196-2¾	949 (1000-2¾)		NA
RNP 0.30 DA	1257-3	1010 (1000-3)		NA

SPECIAL AIRCRAFT & AIRCREW AUTHORIZATION REQUIRED

SW-2, 17 DEC 2009 to 11 FEB 2010

SW-2, 17 DEC 2009 to 11 FEB 2010